

REVOIS THE ALL-IN-ONE TODAS AS VANTAGENS NUM ÚNICO SISTEMA

German-Swiss Precision Technology

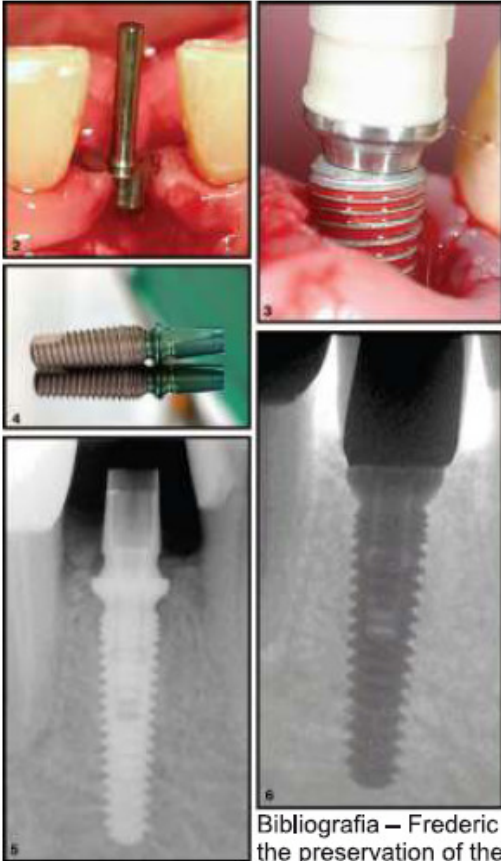


Fig. 2 – Checking 3-dimensional position, using parallelizing posts.

Fig. 3 – Macrodesign of an implant and the integrated platform-switching concept.

Fig. 4 – Revois implant with a rough titanium surface extending to the implant shoulder, integrated platform switching, and a fine thread around the implant neck.

Fig. 5 – Radiological situation at the 1-year follow-up. The marginal bone level is preserved.

Fig. 6 – Radiological control prior to impression-taking showing the multifunctional precision post.

Bibliografia – Frederic Hermann, DDS, Henriette Lerner, DDS, and Ady Palty, DDS, Factors influencing the preservation of the periimplant Marginal Bone; *Implant Dentistry*, Vol. 16, number 2, 2007

EXCELENTE IMPLANTE PARA APLICAÇÃO EM SEIO MAXILAR, DEVIDO A :

- Cover-screw indicado para Sinus de \varnothing 4,3 ou \varnothing 5,0
- Alta estabilidade primária
- Formato cônico
- Zona apical arredondada
- Micro espiras na zona do colo

